

# 5100 Series

Automatic door technology as you've never seen it before!



5100 Series

[www.recorddoors.com](http://www.recorddoors.com)



**record**

your global partner for entrance solutions

# record doors 5100 Series

## A Better Sliding Door

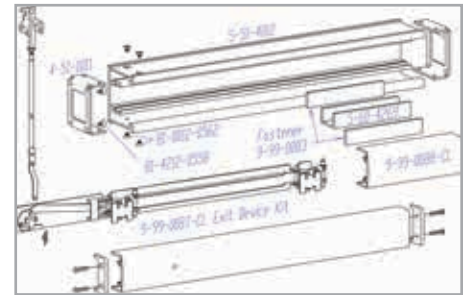


All record-usa Series 5100 automatic sliding entrances allow the sliding doors to break away and swing in the direction of egress when force is applied (similar to a swing door). The doors can be pushed to swing at any point in the door opening or closing cycle (except for Reverse Breakout units), and the force required to break the doors away is mechanically adjustable. On units with exterior swing-out sidelites, breaking the doors away will also cause the sidelites to swing in the same direction as the sliding doors. These units also incorporate mechanical interlocks that lock the sliding doors and sidelites together when the doors are full closed. record-usa utilizes 1 3/4" x 4 1/2" framing for the side jambs and transom members on all sliding entrances. Where applications require, optional 1" x 4 1/2" or 4 1/2" x 4 1/2" framing may be substituted. On telescope, full pocket, and surface mount units, 1 3/4" x 6 1/2" framing is standard with optional 1" x 6 1/2" framing also available. On surface mounted units, 1 3/4" x 2 3/4" (narrow stile) or 1 3/4" x 4 1/4" (medium stile) filler tubes are mounted against the wall or storefront in place of sidelites to provide a weather seal and members to mount the safety beams.

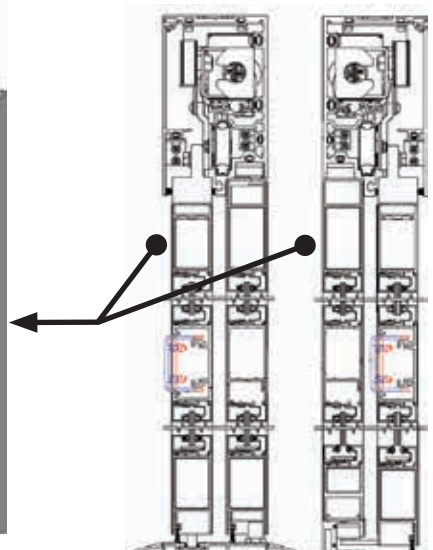
Special Size Extrusions: The Series 5100 narrow stile packages are available with 2 1/2" top rails, 3 1/2" bottom rails, 2" stiles, and 1 1/2" muntin bars. Standard medium stile packages are available with 2 1/2" rails, 6" bottom rails, 3 1/2" stiles, and 1 1/2" muntin bars. The sight line dimensions include 3/4" allowance for glass stop on the daylight side of all members (i.e., 1 1/2" muntins are dimensioned as 3"). Optional special size extrusions are available to allow flexibility in the sight line design to match a certain storefront appearance as required. These extrusions include: RAILS: 5 3/4", 6 3/4", 9 3/4", 10 3/4" and MUNTINS: 4", 5", 5 1/2", 6 1/2", 7 1/2" (NOTE: All the dimensions given above are sight line dimensions including glass stop.)

Also, glass stop configurations are available to accommodate 1/2", 9/16", 5/8", 3/4", and 1" glass in doors, sidelites and transoms. Certain size restrictions apply to sliding doors with special size glass, so please contact record-usa for assistance in designing an entrance to fit your needs.

### 5100 Series Recessed Exit:



- ➔ The new record-usa recessed exit device complies with current egress requirements for size and actuation, extending more than one-half the width of the door and requiring only 1/4" of travel.
- ➔ Complies with the BOCA requirement for the exit device to have a "projection" from the face of the door.
- ➔ Available on full break out (SO-SX) and fixed panel (O-SX) door systems.
- ➔ Integrated into the door with a 3 1/2" tall profile; a matching horizontal is available for sidelites.
- ➔ Standard actuation bar color is clear anodized.
- ➔ Available now as an alternate to paddle exit devices which may not meet code requirements and surface mount devices that may restrict the travel of a door leaf while at the same time limit design parameters.



www.recorddoors.com



**record**

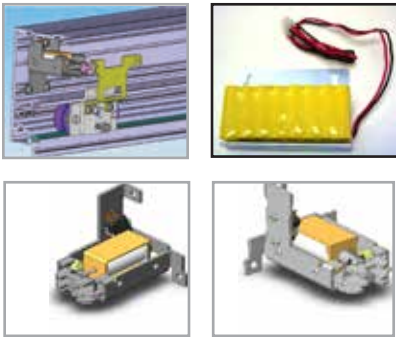
your global partner for entrance solutions



### Options:

The record-usa Series 5100 sliding entrance offers a wide variety of options to provide an entrance which functions exactly as the designer requires. These options include:

**Electric Locking:** Concealed electric locks are available in both fail safe (unlock on loss of power) and fail secure (lock on loss of power) operation. The electric locks are mounted in the header and operate as a carriage lock that automatically locks the door against slide after each open-close cycle, or can be unlocked for daytime use and locked at night.



- **Battery Pack:** A constant charge battery pack is available for use with building alarm and security systems to ensure that entrances are secured in an emergency. The battery pack can be provided to open or close the door upon loss of incoming electrical power or when signaled from the security system. An UPS (uninterruptible power supply) that provides 300 door opening cycles is also available.
- **Partial Open Feature:** A selectable partial opening feature is available for applications that require a full width opening during pleasant weather conditions but a partial opening during harsh weather. The microprocessor-based operator control offers an infinite number of partial opening settings. The partial opening can be constant or automatic depending on traffic volume. In the automatic mode during high traffic conditions, the control will override the reduced opening setting and open the door to the full opening available. Once traffic decreases, the control will return to the reduced opening.
- **Assembly:** Proven composite carrier roller material. Sealed ball bearing construction with an effective anti-derail/anti-rise system. Lifetime roller track system and engineered noise reduction barrier composed of neoprene between track and header.
- **Door Closers:** Doors can be specified on either SX or SO panels that can be concealed in the top rail of door panels. During break out conditions the doors leaves are protected from damage. Doors are assured to close meeting code requirements after break away

### S.M.A.R.T. Panel:

- The 5100 introduces a new control panel with an intuitive interface and visual feedback of door status. Selecting the operational mode of the door is a single button press, and the built-in display will provide confirmation.
- The control panel can be manually locked, preventing unauthorized alteration by those who do not have permission to adjust the door.
- Two control panels can be installed on the same door; one at the unit and one remote.
- The control panel will automatically provide an alert message if an abnormal condition occurs.
- Provides user with the phone number of the authorized service agent.
- Reminds you of your commitment in performing a daily safety check.
- Provides information regarding objects in track that may negatively impact the operation of the door.
- Displays current door setting in regard to traffic selection and egress.
- Indicates when a door has been accidentally broken out.
- Identifies if a safety beam has failed or been damaged.
- Notifies user of which part needs replacement due to failure or abuse. FPC Service and Flash Programmer:
- Highly sophisticated programming and service tool for your certified installer/technician.
- Identically program and configure multiple sliding door systems throughout your building.
- Update software in the slider control to ensure the very latest technology is always available to you.
- Allows certified technician to maintain complete service and repair data over the life of the door.



### Basic Functions:

#### Different Operating Modes:

- Automatic mode with full opening width.
- Automatic mode with reduced opening width.
- Automatic mode in oneway (exit only) for traffic control.
- Adjustable reduced opening mode.
- Continuously open: door opens and remains in open position; either full open or reduced opening width.
- Off mode: door can be easily moved by hand.

#### Safety Functions

Safety sensors (self-monitoring holding beams) in the clear opening of the door prevent the door from shutting if persons or objects are in the detection zone.

Safety automatic reversing mechanism: if the door leaves are inhibited when closing, they are immediately re-opened. If the door leaves are hindered when opening, they are immediately stopped.

The position of the obstacle is stored and will be slowly approached during the next door movement.

Even in the case of power failure the emergency fail close or the emergency opening is assured by the optional emergency power options.

Sidelite Protection – Optional additional sensors located above the opening path of the door will slow the opening if a person or object will inhibit the door opening.

#### Failure Indication

Any irregularity or fault is indicated on the control panel display.

### Customer-Specific Settings:

#### Programmable Values

- Independent door speeds for opening and closing.
- Independent time delays according to actuation (automatic mode or key-operated impulse).
- Independent adjustable opening width at the reduced opening.
- Adjustable acceleration.

#### Additional Functions

- Automatic cancellation of the reduced opening width when traffic is heavy.
- Emergency close with or without automatic locking (option to re-open the door after actuation of the emergency close and close again automatically).



## 5100 Series Sliding Doors

record-usa's new 5100 series sliding door offers the very latest in automatic door technology to assure the quietest, smoothest performance in a sleek and elegant design. Offering a variable breadth of configurations and functions, the 5100 series assures the architect and building owner a wide array of capabilities in ensuring the most safe, secure and attractive entranceway available by choosing from the following options:

### 5200 series All Glass

- Clear line of sight unhindered by vertical stiles
- Single slide or bipart packages available
- For use with 1/2" tempered glass

### 5300 series Heavy Duty

- Virtually silent operation incorporating dual motor operation
- Available for door panels glazed with 1/4" glass up to 10 feet tall; 1/2" and 1" up to 9" tall
- Each door panel may weigh up to 375 pounds

### 5400 series Impact Rated Hurricane

- Steel reinforced doors and panels
- No lock required on SO panels
- Complies with Dade County NOA 15-0316.04
- Incorporates 7/16" Old Castle Glazing
- LMI series (Large Missile Impact)

### 5500 Series Non Impact Rated Hurricane

- Steel reinforced doors and panels
- No lock required on SO panels
- Complies with Dade County NOA 15-0316-05
- Incorporates Glazing from 1/4" to 1" (in 1/4" increments)
- Wind load Series

### 5600 Series

- Choose the 5600 series when desiring to automate wood, hollow metal or other door types and still get the reliability, durability and silence of the 5100 series.

### Other Options:

#### Bullet Resistant Doors:

- Utilizes 1" thick glass laminate UL 753 Level II rated
- Utilizes 7/16" Amortex Composite UL 752 Level III rated (concealed in aluminum extrusions)

record sliding door series comply with ANSI 156.10; UL325; CUL and NFPA 101

### Go Green with record Doors

- Lower wattage consumption than competitive products
- Recycled cardboard as opposed to Styrofoam packaging
- By automatically changing the opening and closing width based on pedestrian traffic flow record reduces air loss out of the building

→ record USA

4324 Phil Hargett Court – Post Office Box 3099 – Monroe, NC 28110  
tel. +1 704 289-9212 – e-mail: info@recorddoors.com – www.recorddoors.com

→ Headquarters

agta record ltd – Allmendstrasse 24 – 8320 Fehraltorf – Switzerland  
tel.: +41 44 954 91 91 – e-mail: info@agta-record.com – www.agta-record.com

www.recorddoors.com



**record**

your global partner for entrance solutions