

Swing Door Operators

6000 Series Low Energy swing door operator for interior doors

8000 Series Heavy Duty swing door operator for interior/exterior doors



swing door operators

Universal Design

The record family of 6000 and 8000 series electro-mechanical swing door operators share the same 15-year proven design platform. Ideal for use with most wood, hollow metal or aluminum glass interior and exterior doors, these operators will compliment any architectural space they are used in.

The universal design allows for one model to be used on the push or pull side of the opening. Proven arm designs allow smooth operation and the ability to use each arm type on the push or pull side of the opening.

www.recorddoors.com



record

your global partner for entrance solutions

record 6000/8000 Swing Door Operators

One platform and a family of door operators to meet your needs

The record 6000 and 8000 series door operators are non-handed and field reversible to easily match any door handing requirements. The electro-mechanical design of the 8000 series allows for reliable, smooth, and quiet operation on interior or exterior doors weighing up to 400 lbs. under both ANSI 156.10 and ANSI 156.19.

The 6000 series shares the same proven design (for use on interior doors weighing up to 175 lbs.). Both operators are equipped with a built in adjustable overhead stop to prevent damage. The 6000 and 8000 perform like a size three through six door closer when adjusted properly and operated manually under ANSI 156.19.

The energy efficient 24 VAC 1/4 HP (8100) and 1/8 HP (6100) Eco-Pulse motors use pulse activated technology motor controls to efficiently start, control and stop the door. This allows for full control of the door during the opening and closing cycles. The Eco-Pulse motor also allows the operator to work inverted. This unique function allows for the door to be opened using spring power and closed using the same Eco-Pulse motor to drive the door closed against certain wind conditions. The optional brake on the 8000 series will hold the door closed in wind conditions or opened for smoke evacuation doors.

The unique standard arm design allows for deep reveals on the push side up to 12". Deeper reveals can be accommodated by using an extension. The same standard arm can also be used on the pull side for reveals up to 1".

The onboard logic-board, (electrical supply 24VAC @.5 amps) and built in door coordinator provide the power necessary and relays required to operate and coordinate the opening of single and pairs of doors equipped with electric strikes, magnetic locks, flush bolts and astragals. When the electric lock function is turned on and the door operator is activated, the door operator will pull the door inward to release any pressure on the strike; the logic-board relay will then fire the electric strike and start the door operator.

The 8000 Series can easily be adapted for balanced door applications and can open fully to 120° if required.

Libraries, doctor offices, and healthcare facilities demand that their daily routines proceed without the common noisy distractions associated with many competitive products. Eliminate your worry of post install performance by specifying the record 6000 series door operators for interior applications requiring compliance with ANSI 156.19 and the record 8000 series door operators for exterior and interior doors requiring heavy duty applications under ANSI 156.10 or 156.19



www.recorddoors.com



record

your global partner for entrance solutions

6000/8000 Swing Door

Standard Features

	6000	8000
Door Location	Interior (only)	Exterior/Interior
Maximum Door Weight	175lb	400lb*
Maximum Door Width		
Single/Double	36"/72"	48"/96"
Warranty	1-year	2-year
Opening Force <15lbs	■	■
Opening Force <8lbs	■	■
Adjustable opening speeds	■	■
Non Handed	■	■
Push or pull operation	■	■
High frequency use	■	■
Complies with ANSI 156.19	■	■
ANSI 156.10 capability**		■
Surface applied	■	■
Full length header	■	■
Push to start	■	■
Auto-reverse	■	■
Obstruction stop	■	■
Stack pressure feature	■	■
Microprocessor controlled	■	■
Latch assist	■	■
Adjustable latch check speed	■	■
Programmable controls	■	■
Positive stop	■	■
Built-in electric strike interface	■	■
Built-in interface for presence sensor	■	■
Meets UL235, UL228	■	■
Self diagnostic	■	■

* Consult factory for heavier weight ** 6000 – ANSI 156.19 only

Additional Features

- Single, pairs or double egress doors
- Doors that require up to 120° door swing
- Swing clear doors
- Available in clear aluminum, dark bronze, and black anodized finishes as standard
- Push to start applications eliminate the need for additional activation accessories and complex field wiring
- Latch assist function assures closing in areas with heavy stack conditions commonly associated with doors in air conditioned and heated environments
- Interfaces with electric strikes without additional relays or delays
- ADA applications
- Breakaway adapter to prevent operator or arm damage if abused
- 24V @ .05 amps power supply to power most magnets and electric strikes
- Various arm options available
- One-piece header across paired opening
- Easily adapted for balanced door applications (8000 Series)

Activations



Touchless
Wave plate activation
BLS 60-REL



Glass panel variants



4.5 x 4.5 push plate

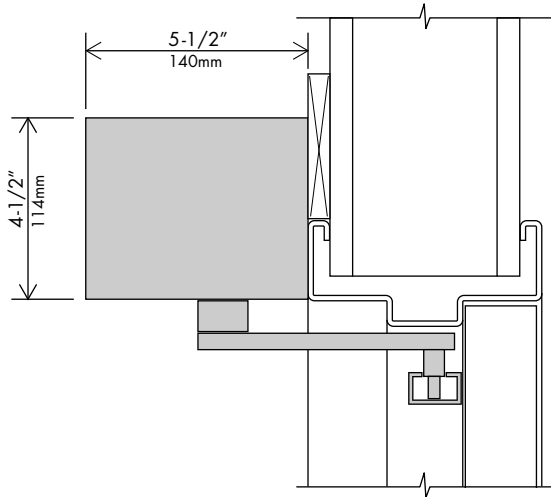


Jamb switch

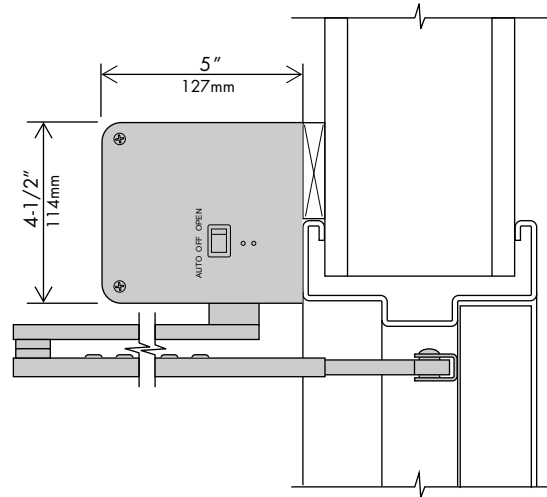
Talk to us about your needs!

6000/8000 Cover options

6200/8200 – Square two piece cover



6100/8100 – Rounded one piece cover



Drive Arm Options

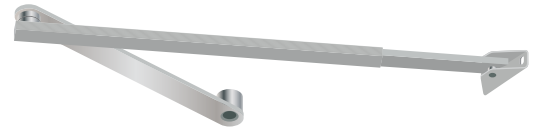
Three types of drive arms are available:

Standard Arm – 9-80-0105

The Standard Arm provides the most flexibility.

Outswing (push) reveals to 12"

Inswing (pull) reveals to 6"



9-80-0105

Slide Track Arm – 9-80-0104

Inswing (pull) reveals to 6"

Outswing (push) reveals to 3"

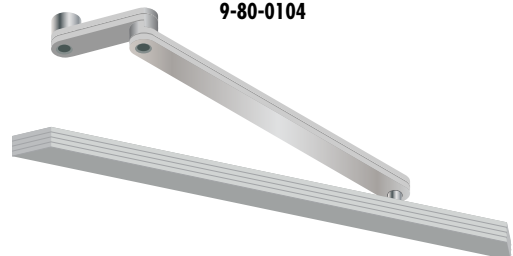


9-80-0104

Slide Track Arm with Offset arm adapter – 9-80-0104 & 9-80-0107

Suitable for center-pivoted doors with breakout capability;

Allow double-egress installations in a common header



9-80-0104 & 9-80-0107

→ record USA

4324 Phil Hargett Court – Post Office Box 3099 – Monroe, NC 28110

tel. +1 704 289-9212 – e-mail: info@recorddoors.com – www.recorddoors.com

www.recorddoors.com



record

your global partner for entrance solutions