

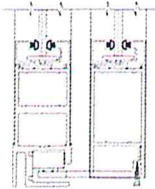


record-usa
4910 STARCREST DR.
MONROE, NC 28110
(704) 289 - 9212

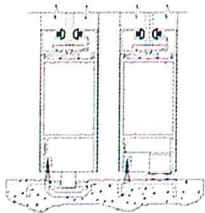
MANUAL SLIDE-SWING DOORS

GENERAL INFORMATION
SERIES 5900 RAPID ACCESS ICU/CCU DOORS
PAGE 59-1.02

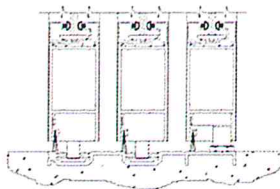
BOTTOM GUIDES: Series 5900 are provided with bottom guides that maintain stable door movement throughout the full open and close cycle. The types of bottom guides available are shown below (NOTE: Pin guides are shown in a recessed application, but are also available for surface mounting).



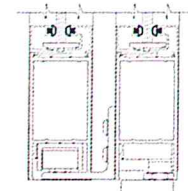
O-SX (FIXED SIDELITE) TRACKLESS: Bottom guide utilizes a pair of Delrin™ rollers with sealed ball bearings rolling in a sway rail extrusion to which the fixed sidelite mounts. The sway rail is limited to the sidelite area so that there is no aluminum threshold in the door area. The sliding door can swing from any point in the open or close stroke. Used on all O-SX units including O-X-SX telescope.



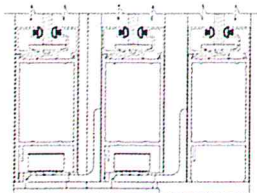
SO-SX (SWING SIDELITE) PIN GUIDE: The 4½" wide pin guide extrusion mounts in the sidelite area keeping the door opening area clear of obstruction. Pin guide can be recessed or surface mounted, and both the door and sidelite can swing from any point in the open or close stroke.



SO-SX-SX TELESCOPE PIN GUIDE: The 6½" pin guide extrusion mounts from side jamb to side jamb allowing all doors to swing from any point in the open or close stroke. Recessed is the preferred application.



SO-SX TRACKLESS: A guide roller is installed on the bottom of the sidelite(s) that rolls in a track installed in the bottom of the door(s), allowing the door and sidelite to swing in tandem. **NOTE: DOOR(S) CAN ONLY SWING FROM THE FULL OPEN POSITION. MECHANICAL INTERLOCKING AND AN ANTI-BREAKOUT TUBE INSTALLED ON THE HEADER PREVENT THE DOOR FROM SWINGING UNTIL IT HAS BEEN FULLY OPENED.**



SO-SX-SX TRACKLESS: A guide roller is installed on the bottom of the sidelite(s) that rolls in a track installed in the bottom of the door(s), allowing the door and sidelite to swing in tandem. **NOTE: DOOR(S) CAN ONLY SWING FROM THE FULL OPEN POSITION. MECHANICAL INTERLOCKING AND AN ANTI-BREAKOUT TUBE INSTALLED ON THE HEADER PREVENT THE DOOR FROM SWINGING UNTIL IT HAS BEEN FULLY OPENED.**

FRAMES: Series 5900 Rapid Access manual slide units are provided with the same 1¾" x 4½" framing used on record-usa automatic sliding entrances (telescope units use 1¾" X 6½" framing). All structural members provide support to allow the door(s) and sidelite(s) to smoothly swing when required. The packages can be installed to allow the door (and sidelite) to swing into the patient room or into the corridor outside the patient room. Doors are supplied with standard recessed pulls on both sides with optional surface pulls available.

